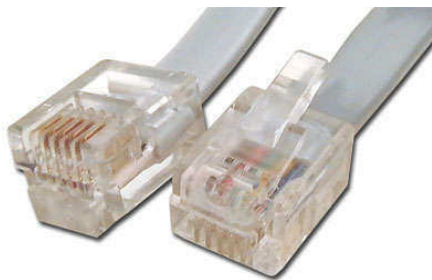


Controlling the AXA Remote 2.0

The Axa Remote 2.0 is equipped with an intelligent connection port. This makes it possible to operate your window from distance by computer or home-automation-system. Possible commands are: open / close / stop. Also the status of the window can be requested (window is opened / closed).



The Axa Remote 2.0 is equipped with two identical RJ25 connections. External devices can be connected via these plugs/hubs, such as an adapter. Also, the device can communicate using the same connection (bi-directional data transfer). Each RJ25 connection is equipped with 6 contacts. The cable with RJ25 connector is easy to shorten with a plug crimp tool.



The RJ25 connection has 6 wires/contacts, the wires have the following function:

- Port 1: +
- Port 2: -
- Port 3: Data
- Port 4: Data
- Port 5: -
- Port 6 +

The cord is symmetrical, so it does not matter how the plug on the cable is placed. Contact 1, 2, 5 and 6 are for supplying power to the Remote window device . Wire 3 and 4 are identical, and meant for data transfer in the two directions.

Window control through computer

It is possible to control a window with Remote 2.0 over external devices such as a computer. Only standard commercially available components are needed. This also makes it possible to use the Remote Axa 2.0 in home automation systems.

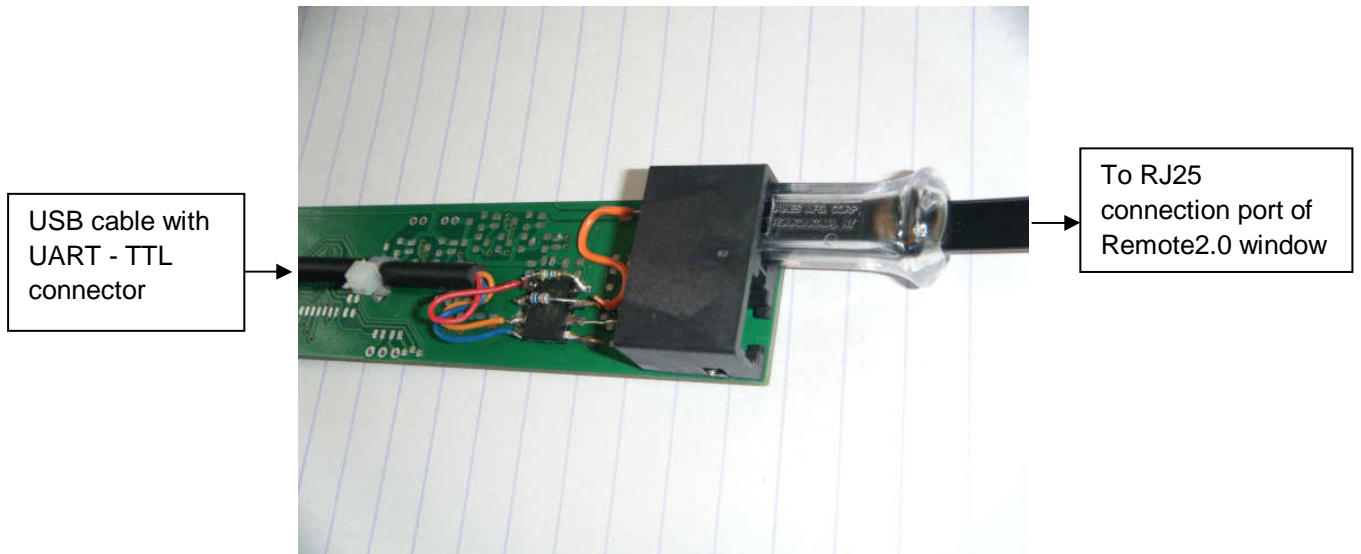


What do you need for computer control:

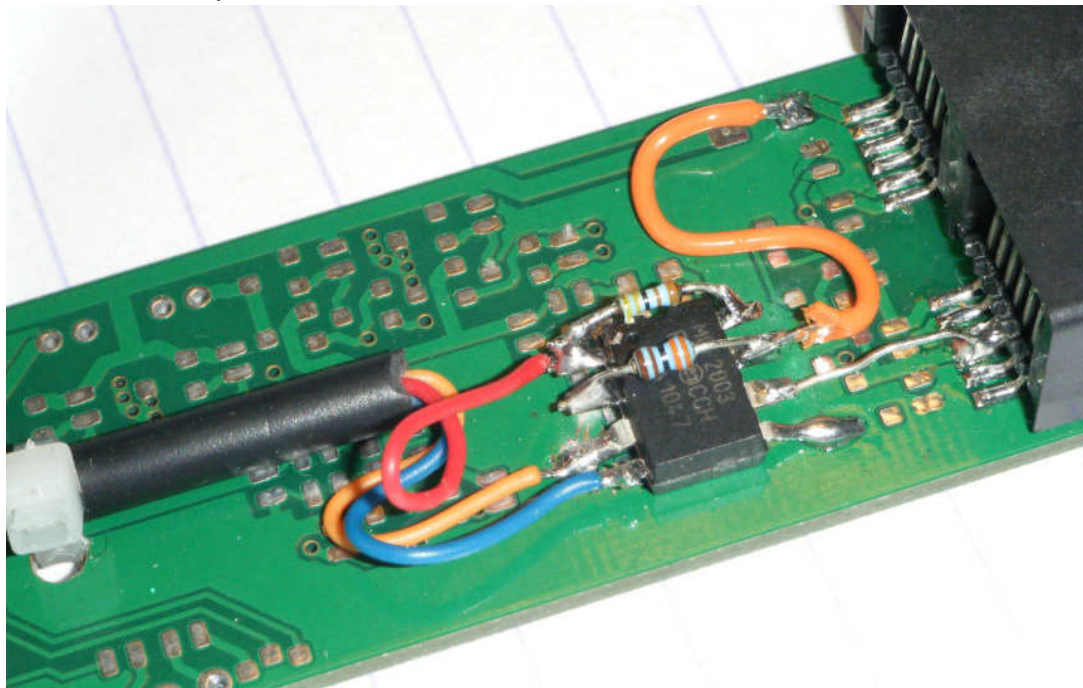
1. Computer with USB port
2. Software program like HyperTerminal (or similar programs Freeware)
3. Connection cable consisting of:
 - a. USB to UART TTL Cable
 - b. print with a TTL converter LIN
 - c. RJ25 cable connector
4. To apply the UART-USB cable, you need a driver
5. AXA Remote 2.0 Window



Convert USB computer connection to RJ Remote connection:



Electronic components on the converter:

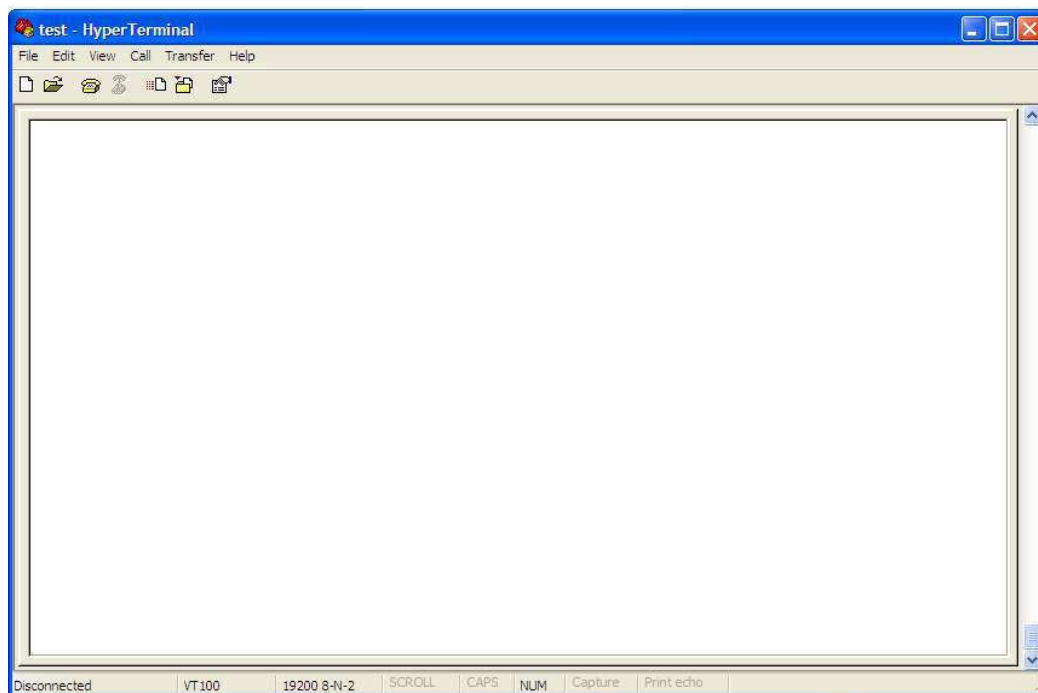
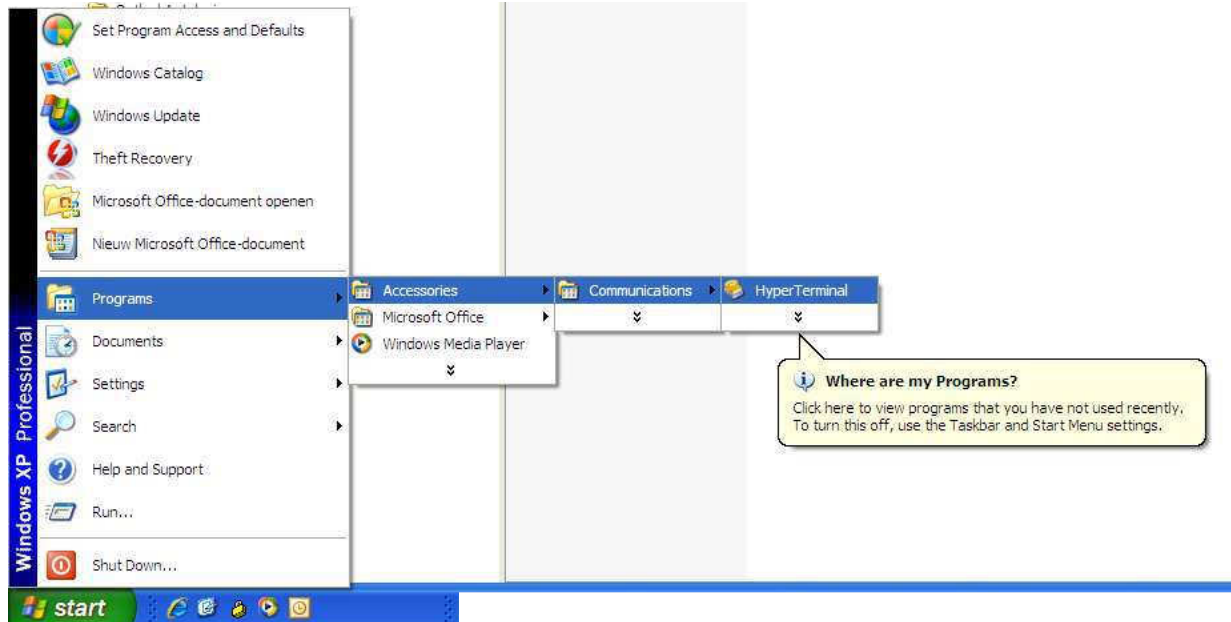


1. Microchip MCP 2031, bi-directional translator between CMOS / TTL Logic and LIN
2. Resistor 3K3 (3300 ohm)
3. Resistor 3K3 (3300 ohm)
4. LIN connection to port 3-4 of the RJ25 connector
5. RJ25 connection port

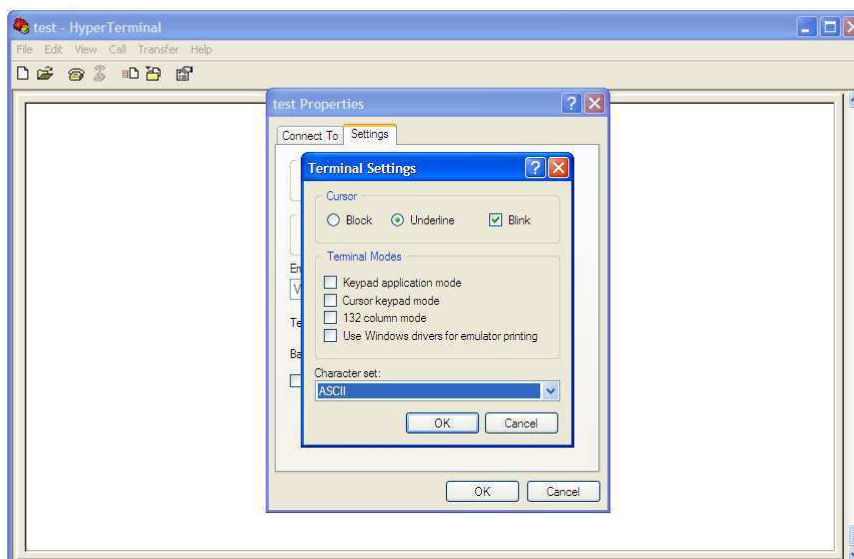
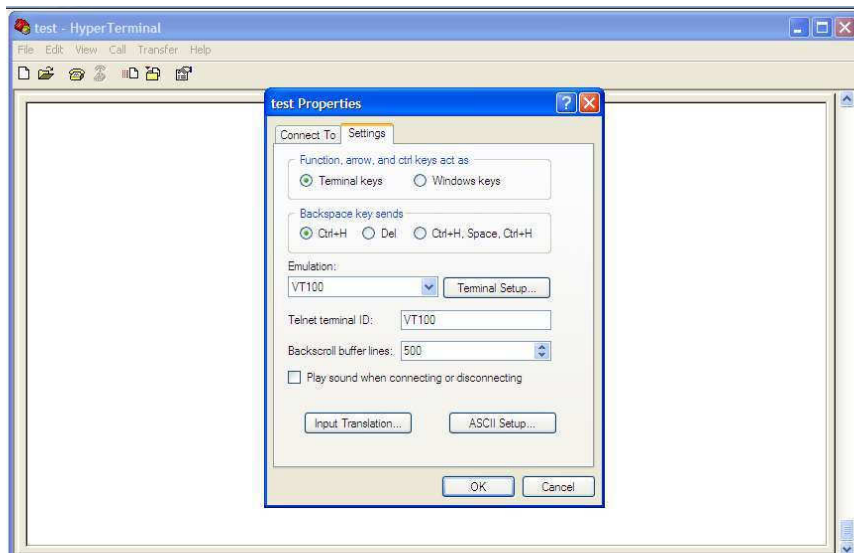
The microchip MCP 2031 does function as a translator. There is no specific software needed to program on this chip.

Software-controlling

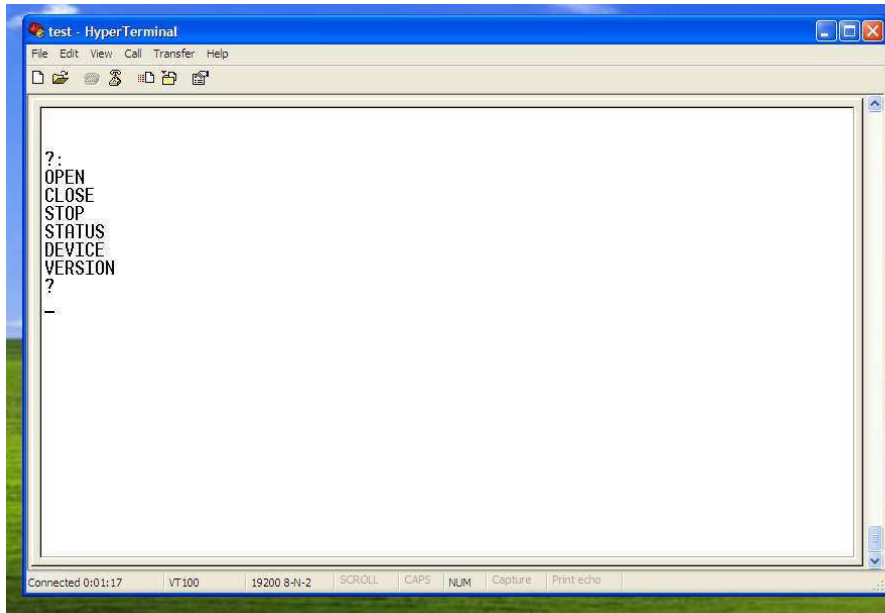
A program such as HyperTerminal is required to connect to the Remote.



A new connection with settings can be created in the program.
Here you select the corresponding USB port.
Data transfer: 19200 BPS, 8 data bit



Once back in the program, you can request the control options by typing:
“?:” + “Enter”



Besides the opening, closing and stopping of the window, you can also request a status of the window position: “Status:” + “Enter”. This program will indicate whether the window is open or closed.

Other information that may be requested:

